

The
**BELGRAVIA
RESIDENT**

SPRING 2022

ASSOCIATION SINCE 1972



EAT DRINK SHOP EXPLORE

JOIN US ON THE ROOF

PANTECHNICON

Head up to our Roof Garden retreat for cocktails and delicious dining, whatever the weather. Walk-ins welcome.

Please do have a cocktail on us when booking for lunch or dinner – quote BelRes22.



roof garden
BAR & RESTAURANT

studio & edit
NORDIC & JAPANESE SHOPS

Café Kitsuné
CAFE & BAR

sakaya
BOTTLE SHOP & MICROBAR

sachi
JAPANESE RESTAURANT



PANTECHNICON.COM
@_PANTECHNICON

19 Motcomb Street, London SW1X 8LB
hello@pantechnicon.com
+44 (0)20 7034 5425

A WORD FROM THE EDITOR



Business activity and life as near-normal have returned in Belgravia and for all the attempts made to encapsulate our neighbourhood into a uniform category, it remains intrinsically eclectic and vibrant, thanks to the wide variety of businesses, pursuits, and the great diversity of residents who call it home. Hence its charm and appeal are unfading.

Since the beginning of 2022, a trend of optimism has continued sweeping through our streets signalling that business has firmly made a comeback. This rebound of general activity has been further stimulated by a bolstered feeling of enthusiasm and a spur of energy and creativity, deriving in great part from this momentous Platinum Jubilee year.

To help keep up with new ventures, up-coming projects and business opportunities, this magazine offers residents, local groups, individual shops, landowners and corporate businesses, the opportunity to circulate their news within the local community and showcase their new products. In this way, its purpose is to strengthen the synergy and develop the dialogue between all actors partaking in our neighbourhood conversations. Whether you would like to let people know about a recent concept or other novelty, or simply share your thoughts on a topic which matters to you and may impact our community, this magazine presents you with an independent platform where you can do so. We look forward to hearing from you.

I hope you will enjoy this Spring issue and I wish everyone wonderful Platinum Jubilee celebrations.

Cecile Sealy
Editor



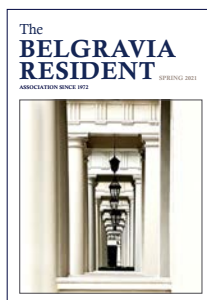
SINCE 1972

INDEPENDENT COMMUNITY
SUPPORT FOR BELGRAVIA

This magazine is produced by the
Committee of the BRA who works on a
voluntary basis in conjunction with local
businesses and residents.

Belgravia Residents' Association
102 Eaton Terrace
LONDON SW1W 8UG

www.belgraviareidents.org.uk



THE BELGRAVIA RESIDENT

Chairman

James Wright
chairman@belgraviareidents.org.uk

Editor

Cecile Sealy
environment@belgraviareidents.org.uk

Graphic Design

Patricia Burtenshaw
pat@fredd.co.uk

Print

Stag Print Services Ltd

CONTENTS

SPRING ISSUE 2022

Chairman's Letter	5
BUSINESS AND RETAIL	
Hello from Grosvenor	6
An English Affair with Marcus Wareing	8
Pantechnicon: Where Nordic and Japanese Cultures Meet	10
The Buttery at The Lime Tree Hotel	11
An Interview at The Chestnut Bakery	12
COMMUNITY LIFE	
London Silenced: A book by Clare Tollemache	14
St Paul's Belgravia	16
HEALTH	
Bryer Wallace Belgravia	18
PROPERTY	
Sotheby's International Realty	20
SAVE THE DATE	
5 June – The Big Jubilee Street Party	21
FROM WESTMINSTER	
Nicky Aiken, MP	22
Cllr Elizabeth Hitchcock	23
Police Report by PC Alford	24
MEMBERSHIP	
23 June – BRA Annual General Meeting	26
Become a Member	26
Neighbourhood Contacts	27

Front cover photograph by Clare Tollemache

CHAIRMAN'S LETTER



For those of you who may be wondering what the Belgravia Residents' Association (BRA) is, let me give you a little insight.

The BRA is the original and recognised amenity Society for Belgravia, formed in 1972 and set up as a leasehold reform group responsible for securing a change in the law, to help leaseholders purchase their freehold from their landlords. The BRA felt it was wrong that when a lease ran out on a purchased property, the freeholder could take possession of it and the purchase price paid was forfeited. The law recognised this issue, and the Leasehold Reform Act was brought into being.

After successfully securing this change, the group decided to stay together for the benefit of residents and lobby on their behalf, to formulate policy for the area and work hand in hand with the Police, the Council and Grosvenor on issues arising. The Belgravia Residents' Association was thus created and made up of a committee of residents who give their time freely.

I have been involved with the BRA since 1995. There have been three Chairmen since inception, with my being the third. During this time, we carried out many campaigns. Some of our achievements, cited below, provide insight into our work.

1. Stopping RBKC turning Sloane Square into a crossroads.
2. Stopping TfL putting a red route through Eccleston Street up to Belgrave Square, stopping heavy goods vehicles careering up this road.
3. Stopping TfL bringing Belgravia into the Congestion Charge area.
4. Reorganising traffic calming schemes through the area by closing Ebury Street to traffic at Grosvenor Gardens and turning Buckingham Palace Road into a two-way traffic flow.

5. Seeing the coach station impose a night-time curfew, not permitting coaches into the Ebury Street exit from 11pm-6am. This curfew still holds today.
6. Ensuring that estate agents' placards are not displayed on properties.
7. In agreement with Grosvenor, introducing in 2014 a set of hoarding fees for anyone in a mews property wanting to erect scaffolding/hoarding during building works. Lengthy building works being often complained about, an incentive to complete works faster was designed and a set of charges were imposed based on the length of time the hoarding was up at a given property. That income was levied by Grosvenor, but the BRA has a say in one third of the fund, to recommend public realm improvements within Belgravia. The fund currently stands at several million pounds.
8. Having the height of part of the new Cundy Quarter reduced, for the buildings fronting Mozart Terrace, ensuring that daylight and sunlight levels of some of Belgravia's oldest listed homes were preserved.

Much more has been achieved by the BRA, from having zebra crossings installed, to working with Grosvenor to ensure a local mix of shops servicing the local community and respect the need for everyday life shops such as chemists, Post Office and newsagents. The Grosvenor team clearly work hard to achieve these aims and maintain the village feel of Belgravia.

Our committee members are allocated one or more roles such as: Planning; Environment; Police; Hyde Park; Traffic; Membership; Mews; IT. We also have a Secretary, a Treasurer and a Community Partner who are the pillars of our organisation.

Simply get in touch if you would like to join us, or send us your query.

James Wright
Chairman

Hello from GROSVENOR



by Paul O'Grady

Firstly, I'd like to thank the BRA for inviting us to contribute to The Belgravia Resident magazine. I've already had the pleasure of getting to know many of you but, for those I haven't met before, I am Grosvenor's Location Director for Belgravia. That means I am responsible for the properties and places in Belgravia that Grosvenor manage, and oversee the various events or community initiatives we host in the neighbourhood.

We hope you find this feature useful. If there's anything you'd like to hear more about, please let me know at BelgraviaDirector@Grosvenor.com.

Understanding Wellbeing in Belgravia

Thank you to everyone that joined the workshops in January which focused on 'What it's like to live and work in Belgravia'. These were a crucial part of a wider research programme we've commissioned to understand community wellbeing. Visit bit.ly/BelgraviaWellbeing to read the workshop report written by independent research organisation, Social Life, who facilitated the sessions. The conversations provided detailed, qualitative data to compare against information we also gathered through street interviews and an online survey. I know many of you also took part in the survey, so thanks for taking the time to share your views.

Through this research we heard from a total of 714 people that live, work, or visit Belgravia. We're currently carrying out extensive analysis of this data and will continue to keep you updated as it takes shape. Ultimately, the findings will help us focus efforts in the areas that most matter to you so that we can have the greatest impact. If you have any reflections on the workshop report or questions about the wellbeing research more generally, please get in touch.

Supporting The Pineapple Project



St Mary's Bourne Street has launched The Pineapple Project, which will provide local people with a new community space and support for the most vulnerable. It will stand in the same spot where, 100 years ago, St Mary's converted the former Pineapple public house

behind the church into a home for its clergy, known as a Presbytery. Signature features of this building will be retained whilst making a space fit for the 21st century that will host everything from music and dance therapy to educational classes and food banks.

We've been following the campaign for several months and are delighted to donate £5,000 to help the project get closer to its £1.5million fundraising target.

Find out more, including how to donate, at www.pineapple.stmarysbournest.com

Project updates

Cundy Street Quarter



John F Hunt Ltd, the contractor for the demolition phase, started the enabling works towards the end of last year. This included various investigations, setting up welfare facilities and installing hoarding. The hoarding will ultimately include a living wall with 12,000 plants to help reduce air pollution and improve biodiversity. We continue to keep neighbours updated through regular contractor newsletters, which you can find at www.cundystreetquarter.com. Please contact the team if you have any questions at cundystreet@grosvenor.com.

Newson's Yard



Pimlico Road Design District is known for being London's premier destination for interior design, art, antiques, and fine furniture. This summer the unique warehouse space at Newson's Yard will become

home to exciting new operators who will be joining internationally renowned designers, makers, and creators. Read more here: www.newsonsyard.com

Ice Factory

We're also making great progress at the Ice Factory on Eccleston Place which will open later this year. Spanning five floors, this repurposed warehouse building will accommodate retail, office and rooftop restaurant, all under one (very distinctive) roof. Find out more at www.icefactorysw1.co.uk.

Upcoming events

Belgravia Wedding Showcase: 28th April-1st May
Bringing together top names in wedding planning and world-renowned brands, this will be the place to go for brides, grooms, and wedding guests. Including inspiring talks from experts, special offers for bridal parties, plus a wedding fair at Eccleston Yards Market. Find out more on Belgravialdn.com, tickets to be released 9th March.

London Craft Week: 9th-15th May

London Craft Week brings together over 250 established and emerging creatives to celebrate crafts people from around the world. The Pimlico Road Series will showcase the Design District with panel discussions, interactive workshops, and fascinating demonstrations with the makers themselves. More details to be announced on Belgravialdn.com soon.

Belgravia in Bloom: 23rd-29th May

Belgravia will pay homage to the uniqueness of Britain at the return of its annual flower festival coinciding with RHS Chelsea Flower Show. This year's theme is 'Beautifully British' so expect to find spectacular installations of Britain's most iconic moments and national treasures from local florists including Neill Strain, Moyses Stevens and Judith Blacklock. More details to be announced on Belgravialdn.com soon.

Stay up to date with Grosvenor news and events across Belgravia:

- ▶ Sign up to Grosvenor's mailing list: eepurl.com/hS93zj
- ▶ Visit the website: www.belgravialdn.com
- ▶ Follow us on Instagram: [@belgravia_LDN](https://www.instagram.com/belgravia_LDN)



An English Affair with Marcus Wareing

The last two years have given me an opportunity to look beyond the restaurant kitchen and discover new passions. As the son of a fruit and vegetable merchant, I've been around fresh British produce since I was a boy, but it wasn't until I inherited a kitchen garden of my own that I realised a passion for gardening and growing my own ingredients.

As a chef in high-pressure, Michelin-starred kitchens, the focus was always on what arrived at the door and how I could take advantage on the

plate. With a strong team taking the reins at Marcus Belgravia, I now have more time out of the kitchen, so am turning my focus to how these beautiful ingredients got to the door.

The last two years have given me the time and space to immerse myself in the world of horticulture at my small holding in East Sussex, taking the time to truly appreciate the effort required to grow and nurture the likes of pumpkins, garlic, rhubarb, beetroot, apples, tomatoes, celery, horseradish, asparagus, herbs and fig leaves, as well as looking after bees and rearing chickens.

“ I'm bringing this passion for homegrown produce back into the Marcus Belgravia kitchen...”

My new show on BBC Two, *Tales from a Kitchen Garden*, follows me as I look to the experts to learn more about the secrets of planting, rearing livestock and growing vegetables.

I travelled all over the country to meet pig, chicken, beef, sheep and duck farmers, as well as picking up tips and tricks from apple growers and the all-important compost experts. I took this knowledge back to my property, expanding and diversifying the garden while welcoming some new animal friends.

I'm bringing this passion for homegrown produce back into the Marcus Belgravia kitchen, doubling down on our commitment to UK goods on both our food menu and drinks offering. We've always placed a focus on seasonal and local ingredients, but this year, I want to take it up a notch, working closely with fantastic farmers and producers to celebrate the bounty of options found in the likes of Cornwall, Wiltshire, the Lake District and Wye Valley.

In the kitchen, I've been working with Head Chef Craig Johnston and Senior Sous Chef, Jack Hazell, to create dishes that champion the wonderful produce on our doorstep. Both share my passion and are already designing some delicious combinations that I can't wait to put on the menu.

We're working with farmers I visited on the show, as well as long-standing suppliers like Lake District Farmers, Huntsham Farm, Keltic Seafare, Abernethy Butter and Wiltshire Truffles.

Spring is one of my favourite times of the year for produce in the kitchen, with the likes of asparagus, wild garlic, baby vegetables, purple sprouting broccoli and nettles all appearing. Since we were closed over April and May in 2020 and 2021, we're working with a blank canvas, which makes it even more exciting. My honey will definitely be making an appearance, but what else appears in the kitchen will be, in part, up to my gardening skills!

We've also introduced an exciting English sparkling, Roebuck Estates, to our wine list. The vineyard is just down the road from my property in West Sussex and is producing some brilliant examples of local bubbles, including my favourite – Rose de Noirs.

I've always known that the UK was home to countless farmers, growers and producers creating amazing ingredients and products for both chefs and home cooks. Through *Tales from a Kitchen Garden* and in the kitchen at Marcus, I hope to find out even more. With shoots already appearing in the garden, I can't wait to see what Spring brings. ■

Catch up on Tales from a Kitchen Garden on BBC iPlayer, or visit Marcus Belgravia at The Berkeley Hotel, Wilton Place, London SW1X 7RL.

Pantechnicon in Motcomb Street feels like a small village in the heart of Belgravia. Its co-creator, Justin Thomas has an innovative approach to sharing his passion for Nordic and Japanese cultures. Behind the traditional façade and terraced café, you can experience five floors of Nordic and Japanese culture, lifestyle, shopping and dining, against the backdrop of English architecture. Quality and attention to detail are, in equal measure, at the core of this individual concept and replicated throughout.



Justin Thomas
and his team

PANTECHNICON: WHERE NORDIC AND JAPANESE CULTURES MEET

by Cecile Sealy

On the ground floor, London's very first Café Kitsuné, a twin of Paris' Franco-Japanese brand Maison Kitsuné, offers speciality coffees, drinks and cocktails alongside freshly baked, creative delicacies. Next to it, a carefully restored 19th century brick ceiling-arch features as a reminder of this building's lesser-known Victorian past. Attention to detail is taken seriously; among the myriad of items available in the Edit gift shop showcasing innovative design, the chopsticks sold here are produced with a grainy tip for a better food grasp! Next door, in Sakaya's bottle shop and bar, fine Japanese spirits and wines are offered under the expert guidance of the bartender.

In every shop, the choice is impressive. On the first floor, anything from a full size original Japanese bicycle, to snug outerwear by Oslo-based Nordic brands can be bought in the Studio Fashion & Design shop. The lower ground floor, complete with a cocktail lounge and bar, offers fine dining in the Sachi restaurant. In the large South facing Eldr roof garden, on the top floor, you can sample fun all fresco Nordic food and snacks all day, and enjoy full

meals for lunch and dinner, under a retractable glass roof. The separate indoors Eldr restaurant offers more formal Japanese cuisine. There is something to discover and enjoy at any time of day.

Justin's quest for perfection extends to the simplistic beauty of the furniture, which is produced by his team of craftsmen, using high quality materials. This is the cornerstone of this concept. He explains that creating a relaxed and welcoming atmosphere in a fine environment is at the core of his people-oriented ethos. The friendliness of his team is testament to his ideology. Here, visitors are guests.

Pantechnicon brings together the Nordic and Japanese lifestyles through gastronomy, shopping, and creative design. It is fun, on our doorstep, and unique in London. ■

Pantechnicon

19 Motcomb Street, London SW1X 8LB
020 7034 5425

pantechnicon.com

www.instagram.com/_pantechnicon

An interview with the Team at The Chestnut Bakery

by Tara Cunningham



When did Chestnut Bakery open in Belgravia?

We opened back in May 2021 after some delays due to COVID. Our team were raring to go, so were so happy when we could finally open our doors! The welcome in Belgravia has been phenomenal and we have really got to know the residents, many of whom are now our much-loved regulars. We've been nominated in the upcoming Belgravia Awards in the 'New Friend' category which we are delighted about! We're now opening our second bakery in Floral Street, Covent Garden in March and hope for another warm reception.

How would you describe the bakery?

Chestnut really is a community hub in Belgravia. Everything is made fresh from scratch at the bakery daily and we pride ourselves on the quality of our menu – it really is all made with love and care. Our range is much wider than you'd expect too – sourdoughs, world breads, pastries, desserts, sandwiches and flatbreads, something for everyone. Our guests love to sit back, enjoy great food and watch our bakers at work in our lamination room, creating our pastries. We want our guests to enjoy the whole experience – delicious food in a beautiful setting with the smell of freshly baked goods in the air.

Tell us a bit about your best sellers

That's a hard one! Our sweet croissants, the twice baked lemon meringue and the almond croissant are real favourites; super indulgent and so striking, guests love them! And anyone with a sweet tooth is

always drawn to the dessert display of beautiful tarts and eclairs.

On the savoury side it's got to be our Za'atar and Gruyere croissant – that's been a best seller since the day we opened our doors – and our mozzarella and kashkawan flat bread, made to order in our clay oven. The inspiration from global flavours has really appealed to the locals.

What can we expect to see from you this Spring?

In March we are launching our limited edition chocolate and coconut croissant, filled with dark chocolate and coconut, then finished with coconut flakes and dipped in milk chocolate. It'll be available for one month only though! It's part of our Monthly Specials range, a new croissant introduced each month. Our February raspberry and white chocolate has been really popular and we're sure this one will be too! We also introduce new flavours across our desserts and sandwiches each month so there are always new flavours to try.

This Spring we will also continue to work with our partners, The Felix Project, donating any leftover bread to food banks in the area and we have some exciting work coming up with Too Good To Go – the food waste app.

Our goal is to really help the community in any way we can and we're really pleased we are in a position to be able to do this. ■

Chestnut Bakery

17-21 Elizabeth Street, London SW1W 9RP
020 3883 5626

THE BUTTERY at The Lime Tree Hotel

by Cecile Sealy

Strategically positioned on the corner of Elizabeth Street – one of Belgravia’s most vibrant and convivial destinations – The Lime Tree Hotel and The Buttery restaurant offer a unique combination of a peaceful garden setting, alongside good quality cuisine available throughout the day.

The Buttery restaurant on the ground floor opened its doors only a year ago and serves all-day brunch as well as à la carte menus every day and more refined dining on Friday and Saturday evenings.

The lawn garden, views of which can be enjoyed from most of the hotel rooms, and the covered restaurant on the terrace, is a privileged feature in this vicinity. Here, guests can enjoy reading their newspaper on a deckchair on the grass or have a snack lunch on a garden table.



The Buttery is a rarity and a blissful and enchanting destination. The countryside vibe emanating from the fresh and crisp décor provides an atmosphere of peaceful greenery, perfect for relaxation in the heart of this lively corner of Belgravia.

With the appeal of outdoor entertaining in this fun and refreshing setting, as we enter the Spring and Summer seasons, bookings are coming fast for the dining rooms and garden, which can be hired for private parties and business meetings.

A little haven in the heart of Belgravia. Well worth discovering. ■

The Buttery
135-137 Ebury Street
London SW1W 9QU
020 7730 8191
limetrehotel.co.uk



The Buttery



15% off your dinner
bill in March

(excludes alcoholic drinks, applies to advance bookings only)

135-137 Ebury Street, Belgravia SW1W 9QU
020 7730 8191 www.thebutterybelgravia.co.uk

LONDON SILENCED



by Clare Tollemache



I have been lucky enough to live in Belgravia all my life. Not only is it like living in a large village but also a very friendly one. I rarely walk down a street without chatting to friends or strangers. What is noticeable is the pride everyone takes in their properties and surroundings thanks in many ways to the Grosvenor Estate which has managed the Belgravia ‘village’ for over 300 years.

It was from here in March 2020 that I started my walks around London with my camera, usually my iPhone, and captured the hauntingly empty streets which had such an eerie feeling to them that I at once realised that I was living and recording history.

In my book, *London Silenced*, I have tried, and I hope succeeded, in capturing a moment in time that none of us will surely ever forget and that is the story of London during the worldwide pandemic between the months of March 2020 and July 2021. Although we may all want to put the very thought of COVID-19 behind us, we will in time, I feel, be glad to have a visual history to refer back to and show the next generations.

Fortunately, this book is not just about the lockdowns. It gave me the chance, as an amateur photographer, to slow down and to see details around London that I would previously have raced past without so much as a backwards glance.



Left: Battersea Power Station viewed from the railway lines

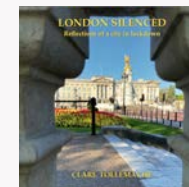
Below: Belgravia Books



I found myself constantly drawn to the river. The combination of different light on water means that you can take photographs from the same spot day after day and you will never get the same shot. I have loved exploring the varying conditions and the effects on the texture of a photograph. Having said that, my main aim is to find views that people know well and to find a different perspective in the hope they will see something they’ve never seen before.

Social media played a large role in this too. I kept posting images on Instagram and Facebook and was thrilled to receive huge encouragement from followers to carry on posting and that is what I did. As time went by I received requests to publish a book and that is where a whole new journey began!

One of the most exciting parts of publishing a book and being able to call myself an author has been getting to know local independent bookshops and Belgravia Books is no exception. They rely on the support of us Belgravia residents, and with their relatively new location almost next to the Post Office in Eccleston Street, there is no reason not to pop in and have a good browse! ■



For any further information on my photography and book, please visit

www.claretollemachephotography.com

The Moira Stations at St Paul's Knightsbridge: an art deco treasure restored for the 21st century



The Via Dolorosa in Jerusalem (literally “sorrowful way,” sometimes called the “way of suffering”) is a winding route that represents the final journey made by Jesus on Good Friday. As mediaeval pilgrims returned from Jerusalem to their home churches and cathedrals in Europe, the tradition arose of evoking the solemn pilgrimage along the Via Dolorosa in local churches by means of fourteen ‘Stations of the Cross’. These Stations could be ‘walked’ by the faithful as a way of identifying with the passion of Jesus, and a series of formal prayers emerged to be said at each stopping point.

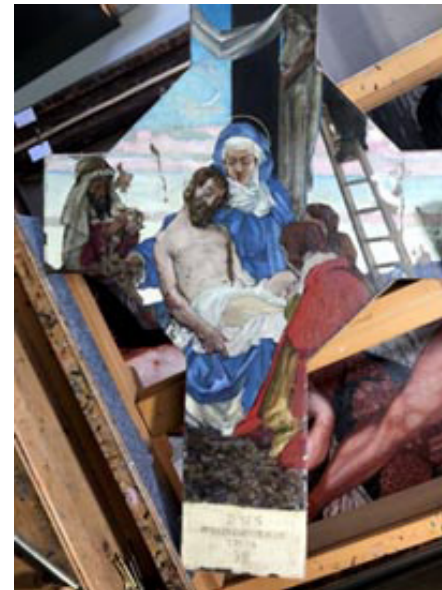
In St Paul's Knightsbridge in Wilton Place, a set of Stations was painted by Gerald Moira, Professor of Decorative and Mural Painting at the Royal College of Art (1900-1922), and installed between the tiled panels in the nave as a series of memorials after the First World War. Moira, a Londoner, began life as a painter of miniatures, but a series of commissions, first from J. Lyons and Co. for a mural in the Trocadero restaurant in Shaftesbury

Avenue, and then for the boardroom of Lloyd's Register of Shipping, and paintings and stained glass for the Old Bailey in London, changed his artistic direction. He had already, between 1912 and 1916, painted the recently installed paneling in the chancel with a series of figures representing the key figures associated with the Anglo-Catholic tradition, ending with the first four vicars of St Paul's. As far as we know, this set of Stations is unique in his output. The Stations have been much used as a devotional focus, especially during Lent, by generations of parishioners, but had over a century of use inevitably become dulled and dirtied, and in a couple of places had suffered water damage.

In 2018, Duncan McLaren, who has known St Paul's Knightsbridge since childhood and who lived for some time in Wilton Crescent, approached the Vicar to ask if he might pay for the restoration of the Stations. With permission, they were removed and restored by Hamish Dewar in his workshop in St James's. But what had provoked Duncan's instinct to pay for the project?

Duncan had noticed that the dedication under the first station was to Philip Bentinck Boyd RAF, a Canadian who died in 1917 and nephew of the then Vicar, Francis Leith Boyd.

There is a parallel in Duncan's own life: his own father, Squadron Leader Robert Duncan McLaren came from Toronto, Canada, and was in the RAF during the Second World War. He was a pilot and a navigator and was responsible for the discovery of the German battleship, the Tirpitz off Håkøy Island near Tromsø, Norway in 1944, hiding in a Fjord. This discovery led to the RAF sinking the Tirpitz, thus shortening the war and saving many lives – although many lives were lost as it was bombed.



“Wouldn't it be rather wonderful, Duncan said, to quietly restore the Stations to their former glory?”

Duncan's father received an immediate Distinguished Flying Cross (DFC) for his efforts at the order of Churchill. Wouldn't it be rather wonderful, Duncan said, to quietly restore the Stations to their former glory, and to put a small plaque echoing the dedication under the first Station?

Shortly, a plaque close to the first Station will be installed: *The Stations of the Cross were restored in 2018 in memory of Squadron Leader Robert Duncan McLaren RAF DFC of Toronto, Canada March 1917-April 1945, killed in action, and Joyce Catherine, his widow, 1919-1995 by Duncan Hugh McLaren, their son, a parishioner.*

Local residents and others are welcome to view the Stations when passing. St Paul's Knightsbridge (next to The Berkeley Hotel) is, as far as possible, open daily for prayer and visits. ■

www.spkb.org

NEW DENTAL PRACTICE IN BELGRAVIA



Bryer Wallace Belgravia is about as far removed as you can possibly imagine from a fossilised dinosaur. This sleek new dental practice has been purposefully designed to offer private dental care for adults and children in luxurious surroundings... and to house the skull of a dinosaur named Stan.

MEET STAN (psst he's a dinosaur... not a dentist!)

Stan with Mrs Rob Wallace



On display in reception is a life-size replica of a T-rex skull from one of the most complete *Tyrannosaurus rex* specimens ever found, named after amateur discoverer, Stan Sacrison.

Boasting a perfect set of jagged-edged teeth, Stan the T-rex has "possibly the best set of teeth the planet has ever seen", according to lead clinician, Rob Wallace.

At up to 30cm long, including the root, T-rex teeth are the largest ever! When he lost a tooth, Stan also had the ability to grow a replacement. How useful would that be?

Situated here in the heart of Belgravia, Bryer Wallace Belgravia acts as additional specialist surgeries in conjunction with the renowned Bryer Wallace Knightsbridge practice in Sloane Street. Between them, the two establishments offer comprehensive treatment for every aspect of your dental treatment.

For the new practice, Rob Wallace has cherry picked the very best clinicians, expanding the fields covered in the process. He is thrilled that paediatric dentistry and facial aesthetics can now be accessed for the first time at Bryer Wallace.

In addition to dental hygiene, the expert clinicians at Bryer Wallace Belgravia cover the following specialist areas of dentistry:



Rob Wallace

Adult and child orthodontics

From traditional fixed braces to discreet removable aligners, specialist orthodontists offer teeth straightening treatments for all ages.

Paediatric dentistry

Newly available is a range of private dental services for children. The dentists go out of their way to relax younger patients.

Facial aesthetics

Facial aesthetic treatments, such as dermal fillers and full plastic surgery advice and guidance, are newly available with a world-leading clinician.

Oral surgery

A specialist oral surgeon offers all aspects of oral surgery, including wisdom tooth removal.

Patients can also access treatments at the nearby Sloane Street practice, including general dentistry, cosmetic dentistry, dental implants and more. To assist diagnosis and treatment planning, the clinicians are supported by the latest technology and facilities, including digital radiography services and 3-D intra-oral scanning. There is even an on-site laboratory for the construction of bespoke crowns and bridges.

Kerry Zoina, who has been with Bryer Wallace for 15 years, manages both Bryer Wallace practices. She describes the atmosphere at the new clinic as "highly professional yet welcoming, with a lovely feel for families", and is proud "we can now offer our patients everything". Kerry adds, "We have high standards and do our very best for our patients, often going above and beyond. Our patient care speaks volumes; in fact, most new patients hear of the practice via word of mouth."

A LITTLE NERVOUS?

A special note for you if you or your child is at all anxious about visiting a dentist, especially one with a resident dinosaur... If this is you, do get in touch and they'll be happy to ensure your visit is as relaxed and stress-free as possible. In addition, they have the facilities for dental sedation either via inhalation or intravenously under an anaesthetist.

Conveniently for readers of *The Belgravia Resident*, the practice is on West Halkin Street, in the heart of Belgravia. It is open on Wednesday evenings.

Why not get in touch with the friendly team at Bryer Wallace Belgravia to make a new patient appointment or to simply ask a question?



11a West Halkin Street, Belgravia, London SW1X 8JX

Click to call 020 3833 1510 | Click to email

www.bupa.co.uk/dental/dental-care/practices/platinum-bryer-wallace-belgravia

The Local Estate Agency bringing Britain's Best-in-Class Houses to the International Market

You may have seen UK Sotheby's International Realty recently, out and about in Belgravia and Central London. Their approachable and warm demeanour leave you feeling confident that you'll be working in an environment of excellence when you decide to sell, buy, let, invest and manage your property with them.

By the numbers, they have 1000 offices in 77 countries, and the local experts at the UK offices are part of a network of 25,000 agents. Internationals moving and investing in London have been a long-known trend, but in a post-pandemic world enlisting the help of this agency means that your property will benefit from global exposure, thus increasing the likelihood of a quick sale at asking price. With £89 billion in annual value from 1,410 closed referrals, UK Sotheby's International Realty bring their clients qualified buyers quickly.

Since the founding of the auction house in 1744, the Sotheby's name has become renowned for handling the sale of many of the world's most valuable and prestigious possessions. Sotheby's International Realty was founded on the same reputation in 1976 and attracts the world's most discerning individuals, who appreciate the finer things in life, where property plays a key part.

In recent months sales have included a £20m townhouse and a £4.5m apartment, sourcing buyers for these types of sales through our unrivalled global referral network is the distinction for what we can do for our clients. Our brokers 'little black book' of contacts, and Sotheby's International Realty agents around the world trust them as local area specialists, and appreciate having just one point of contact throughout the process.

Landlords should take advantage of their trial offer right now: three month's free property management if you sign on for six months. The services are bespoke to your needs and offer experienced advice for all types of residential properties. There are two service options of rent management and/or fully managed. Managing a property can be a full-time job, especially with work, family commitments or particularly if you spend time away. Their complete management service includes:

- Day-to-day running of the property
- Vetted contractors and rates
- Inventories and end of tenancy deposit negotiations
- Tenancy alteration administration
- Regulation advice and updates
- Legal action (in the rare event that this is necessary)
- Health and Safety administration
- Optional refurbishment and interior design service
- Out-of-hours emergency service
- Service charge and ground rent payment
- Proactive rental collection



Nothing compares. >

For more information, contact the office directly:

77-79 Ebury Street, London, SW1W 0NZ | +44 (0) 20 7495 9580 | london@sothebysrealty.co.uk

5th June – The Big Jubilee Street Party

by **Angela Hay**
Chair of BTA

The Belgravia Traders' Association (BTA) has always worked to be part of the fabulous Belgravia community. The businesses that we represent are from Elizabeth Street, Ebury Street, Eccleston Yards, Eccleston Place, Eccleston Street and Lower Belgrave Street. The BTA has been in existence for over 30 years and, in that time, has been responsible for many fun events in the area – the Christmas markets, the Summer parties, the Christmas light switch on – and all these events have been put together by the members for the enjoyment of all.

Some of you might have come along to our outdoor Fashion Show in September 2021 which was a fun and successful event and we are always looking for ways to both include the residents whilst promoting our businesses and having fun along the way.

This year is clearly an important one for the UK with The Queen reaching her 70th year as Monarch; quite an achievement for anybody to stay in one job that long! We had already been discussing a Summer event but the announcement by Alan Titchmarsh of the Big Jubilee Lunch over the weekend of 3rd-5th June decided us, so the BTA is going to plan and host a Street Party along Elizabeth Street and onto Ebury Street to join up with Eccleston Yards.



We want laughter, festivities and for you all to come along. WCC have already confirmed that the fees for closing the roads that weekend will be waived for which we are very grateful as it makes the whole thing possible. Grosvenor are helping with bunting and music so the scene is set for a truly lovely day.

Hubert Beatson-Hird, co-owner of The Ganymede, is going to project manage the actual day with his team, supported by a committee of BTA members plus a few residents also joining in. We want to be as inclusive as possible. We know he will bring his boundless energy to the event to make it memorable.

There is a lot of work to do in a short amount of time and plans are still in the very early stages. We are hoping to have tables, refreshments, singing and general frivolity with the businesses showcasing what they can do. We have already had interest from various groups across London, who we are in touch with, who really want to come and celebrate the Jubilee so near to Buckingham Palace!

We are looking for further sponsors and any ideas that you have we would love to hear about. Once we have further details about how the day will work we will let you all know.

After such a tough two years for the entire nation, we believe that it is time to celebrate our past and look to the future in a positive way and believe that this event can be part of that.

If you have ideas for sponsorship or anything else please contact angelajanchay@outlook.com. ■



NICKIE AIKEN MP: Celebrating the Rich Offering of Belgravia

Across the Two Cities, we have global recognition for the array of shops available on our doorstep. From the renowned destinations of Oxford Street, Bond Street and Regent Street to the equally charming array of shops available here in Belgravia. The small, independent, and family run shops and businesses are what makes our corner of London such a spectacular and special place to live.

Throughout 2022, I'm continuing to champion and support our small, independent and family run shops and shine a spotlight on these incredible businesses. Belgravia has a rich host of wonderful independent shops in Elizabeth Street, Eccleston Street, Pimlico Road and beyond. Let me know your suggestions for where I should visit, and which business in the Two Cities you think stands out. Share with me at [nickie.news/TwoCitiesShops](https://www.nickie.news/TwoCitiesShops) and keep up to date on Facebook and Instagram with #TwoCitiesShops.

Another area of focus in this edition of *The Belgravia Resident* is reading. It's never too early, or too late, to get into reading and World Book Day on 3rd March offers us another chance to celebrate our favourite authors and pick up another great find from the shelves.

In Parliament, I lead a Conservative women's book club and do my bit to encourage female Conservative MPs to take a break from Westminster and immerse themselves in a good book. We're currently reading Bonnie Garmus' *Lessons in Chemistry* and I must say it is one to watch! Look out for its launch later next month.

“Throughout 2022, I'm continuing to champion and support our small, independent, and family run shops”

To celebrate World Book Day, in partnership with the Publishers Association, we championed the day and brought Parliamentarians from all sides of the political divide to recognise the joy of reading. There were some brilliant suggestions. Find out more at www.nickie.news/WBD22.

Here in Westminster, our libraries and archives are something we can all be proud of. Victoria Library along Buckingham Palace Road is open six days a week and has an abundance of activities and events taking place for all age ranges. What's more, with the Westminster City Council Online Library, over 40,000 books are available via your laptop or phone, allowing access wherever you are. They're completely free for people living in Westminster. Across the Two Cities there are so many ways to immerse yourself in a book, whether it be at charming book shops like Belgravia Books on Eccleston Street, or through the vast catalogue available from Westminster City Council. There is no better time than now to get into reading or pick up the next thriller.

If there are any issues I can help with, please email me at nickie.aiken.mp@parliament.uk and keep up to date on Facebook, Instagram and Twitter @TwoCitiesNickie. ■



CLLR ELIZABETH HITCHCOCK Deputy Cabinet Minister

When asked what Westminster City Council does, most people say that the council collects rubbish and cleans the streets. Of course, the council does so much more than that, but although many residents do not use some of the services Westminster City Council provides, everyone has their rubbish collected and their streets cleaned. Most of the time, the service is so efficient and seamless that we cease to even think about it. But when there is uncollected rubbish on the streets (often because it is put out on the wrong day), residents do notice. And uncollected rubbish leads to more dumping which often leads to vermin getting in the bags which creates an ever-bigger mess.

Thankfully, this is not a regular occurrence in Belgravia and most people recognise how important it is to all of us that their rubbish is disposed of in the correct manner and at the correct time. But for those who have yet to get on board, we have launched Proud of Westminster, to encourage both our residents and businesses to recycle more and dispose of waste correctly, encourage people to act more sustainably and to keep our streets sparkling clean and safe.

To collect refuse and keep the streets clean, Westminster has launched a fleet of sixty fully electric vehicles that will allow an 89% reduction of CO2e emissions compared to a diesel fleet, in line with Westminster City Council's carbon net-zero by 2040 plans. It will also help improve air quality and lower noise pollution as electric motors are significantly quieter.

This collection of state-of-the-art electric vehicles will transform the way we clean our streets and collect waste and recycling across Westminster. In some parts of Westminster, cleaning and collections are done only by electric vehicles, but we will roll out more electric vehicles over the coming months.

We rely on residents to let us know when things are not quite right, but we also have our fantastic City Inspectors who are out and about on foot in the ward, looking for issues to be fixed, whilst always liaising with councillors and residents. Belgravia is beautiful and we all want to maintain what we have. So should you notice something that needs to be addressed in your neighbourhood, such as rubbish that needs to be collected, a streetlight that needs replacing, a broken kerbstone, etc, please do get in touch with one of us or use the Report It portal. Report It is incredibly easy to use – you will get a reference number and you will be contacted when the issue has been resolved.

There is more to the council than just waste collection, but it is an incredibly important issue. If we can be of help with this or anything else, please do get in touch. We look forward to hearing from you. ■

CLlr Tony Devenish
tony@tonydevenish.com

CLlr Elizabeth Hitchcock
ehitchcock@westminster.gov.uk

CLlr Rachael Robathan
rrobathan@westminster.gov.uk

POLICE MATTERS

by PC Dave Alford

Residential burglaries

Unfortunately, there have been a few burglaries over the last twelve weeks, both residential and non-residential. These have been carried out on premises in the Belgravia area and mainly targeted unoccupied or insecure properties. The suspects have used force against windows and doors using tools or smashing windows. In particular, sash windows can be a weak point if these are not secure with the correct sash locks and fasteners. The use of CCTV, video doorbells and alarm systems help to make properties less appealing.

Another method used by the suspects is to use other properties to climb onto and gain access. There have been one or two reports where scaffolding has been used to gain access to a neighbouring property. We recommend that scaffolding has an alarm system fitted along with CCTV, but this would need to be taken up by the contractors for the venue.

Theft of personal property

We previously mentioned an issue with Table Surfing where suspects use distraction methods to take customers' mobile phones while eating at venues in and around Belgravia. I personally dealt with an incident involving a Belgravia resident who had their phone taken using distraction techniques. After investigating the matter and using CCTV footage from the venue, the suspect has now been identified and work is ongoing to locate them.

There have been a number of mobile phone snatches, where suspects have used electric bikes and scooters to get about. When looking at this type of

crime we find that the victims are usually distracted while using the phone. Remember to Look up. Look out.

The key things you can do to help prevent robbery/theft are:

- Stay aware of your surroundings and pay attention to who's around you.
- Keep valuables such as mobile phones, watches and cash out of sight.
- Plan your route home.

Supercar meetings and related anti-social behaviour

Since the beginning of 2022 officers from the Knightsbridge and Belgravia team led by Sgt Karl Rees have carried out a number of traffic operations to target anti-social behaviour caused by unplanned noisy car meetings. These meetings were having an impact on the local community due to the noise and dangerous driving by those attending.

Working in partnership with our colleagues from Kensington and Chelsea, Met Police Traffic officers and Westminster council, a number of offences were identified. The most recent operation on 12th February had the following results:

3 Arrests: 1 x Drug Driving; 1 x Drug Driving and Possession of Cannabis; 1 x Drug Driving, fail to stop for police, fail to stop at road traffic collision. 4 x Vehicles seized, 4 x Sec 59 warnings issued, 9 x Traffic Offence Reports issued (for offences ranging from no MOT and no insurance to modification offences such as illegal tints and lights), 4 x Drug searches – 2 positive for possession of cannabis.



To take part in Community Roadwatch, or to suggest a residential area where there are community concerns around speeding, please send your enquiry to: CommunityRoadwatch@met.police.uk. ■

If you wish to report a crime, use 999 in an emergency, or 101 for non-emergency. You can also report crime online at www.met.police.uk. Should you wish to contact the Knightsbridge and Belgravia Team, please use the following contact methods:

Tel: 07769 164785 (not 24 hours)
Email: Knightsbridge.Belgravia.snt@met.police.uk
Twitter: [@MPSKnightsbrdge](https://twitter.com/MPSKnightsbrdge)

Since the latest operation there have been no reported car meetings and we will continue to monitor the situation.

Community Road Watch

Due to receiving complaints regarding vehicles being driven at high speeds around Belgrave Square, PCSO Zack Slaney will be working with our colleagues from Safer Transport to carry out a Community Roadwatch operation – a road safety initiative which aims to reduce speeding in residential areas.

Community Roadwatch gives local residents the opportunity to work side by side with their local police teams, and use speed detection equipment to identify speeding vehicles in their communities. Warning letters will be issued where appropriate, and the information can help to inform the future activity of local police teams.





INDEPENDENT COMMUNITY
SUPPORT FOR BELGRAVIA

23rd June – BRA Annual General Meeting

This year, the BRA's AGM will take place in Wilton Crescent Gardens, followed by drinks in the gardens. Further details and RSVPs in our Summer issue.

BECOME A MEMBER

Membership advantages

- ▶ Advice and support on:
 - Planning applications
 - Building developments
 - Traffic issues
 - Residents' parking
 - Roadworks
 - Environment
 - Conservation
 - Local Policing
 - Noise
 - Licensing
- ▶ Membership card, providing special offers from local traders, businesses and events
- ▶ Invitation to our AGM and opportunity to vote
- ▶ Have your say
- ▶ We will lobby on your behalf if necessary
- ▶ Come along and meet our community at the events we organise

Join us today

For membership, please visit www.belgraviarésidents.org.uk/members
email: membership@belgraviarésidents.org.uk
or fill in the form below and post it to: BRA, 102 Eaton Terrace, London SW1W 8UG

Membership Form

Open to all residents, businesses and anybody working in Belgravia:

- Family membership: £30 Business membership: £60
- Discretionary contribution: £10 £20 £50 £100

Full name: Email:

Address:

Telephone: Mobile:

Date: Signature:

WORKING TOGETHER FOR A BETTER BELGRAVIA

NEIGHBOURHOOD CONTACTS

Nickie Aiken MP (Con)

MP for the cities of London and Westminster
nickie.aiken.mp@parliament.uk
020 7219 4553
www.nickieaiken.org.uk
@twocitiesnickie

COUNCILLORS KNIGHTSBRIDGE & BELGRAVIA WARD

Main phone number: 020 7641 3411

Cllr Rachael Robathan (Con)

leader@westminster.org.uk

Cllr Tony Devenish (Con)

devenish@london.org.uk

Cllr Elizabeth Hitchcock (Con)

ehitchcock@westminster.gov.uk

WARWICK WARD

Main phone number: 020 7641 5377

Cllr Christabel Flight (Con)

cflight@westminster.gov.uk

Nickie Aiken MP (Con)

nickie.aiken.mp@parliament.uk

Cllr Jacquie Wilkinson (Con)

jjwilkinson@westminster.gov.uk

CHURCHILL WARD

Cllr Murad Gassanly (Con)

mgassanly@westminster.gov.uk
020 7641 5377

Cllr Shamin Talukder (Lab)

stalukder@westminster.gov.uk
020 7641 4299

REPORTING ISSUES

WCC's 24hr helpline: 020 7641 2000
environmentalactionline@westminster.gov.uk

Report It Portal:
www.westminster.gov.uk/report-it

CITY INSPECTORS

Knightsbridge & Belgravia: John Whelan

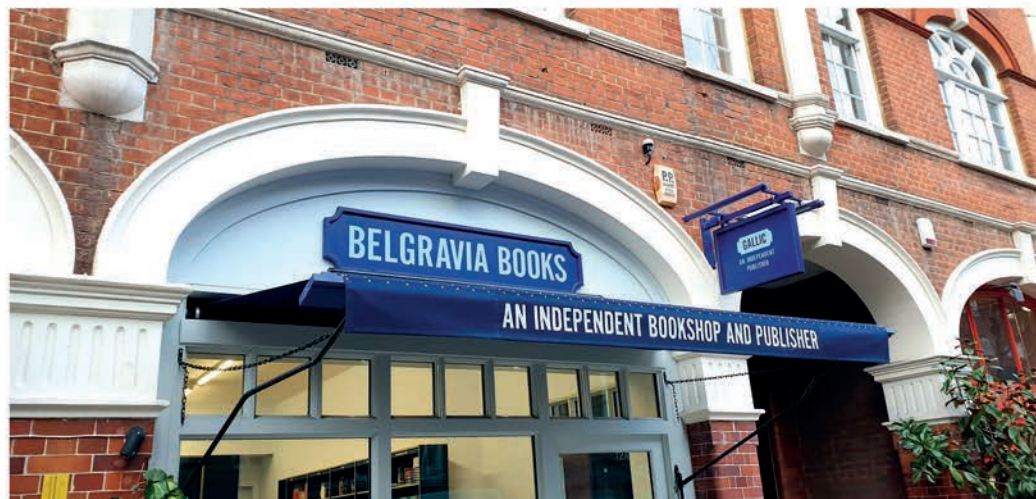
Public Protection and Licensing
07816 213102
jwhelan@westminster.gov.uk

Churchill ward: Stuart Ross

020 7641 2305
ross@westminster.gov.uk



INDEPENDENT COMMUNITY
SUPPORT FOR BELGRAVIA



BELGRAVIA BOOKS

AN INDEPENDENT BOOKSHOP

FICTION | NONFICTION | CHILDREN'S BOOKS

GREETING CARDS | GIFTWRAP

NATIONAL BOOK TOKENS

**12 Eccleston Street
London SW1W 9LT**

www.belgraviabooks.com

enquiries@belgraviabooks.com

020 7259 9336

belgraviab

20% DISCOUNT FOR MEMBERS OF THE BELGRAVIA RESIDENTS' ASSOCIATION

JOIN OUR MAILING LIST

